

R-9288/R-9289

F3X/F8X/E9X Lap Belt Mounts for stock Power/Manual Sliders

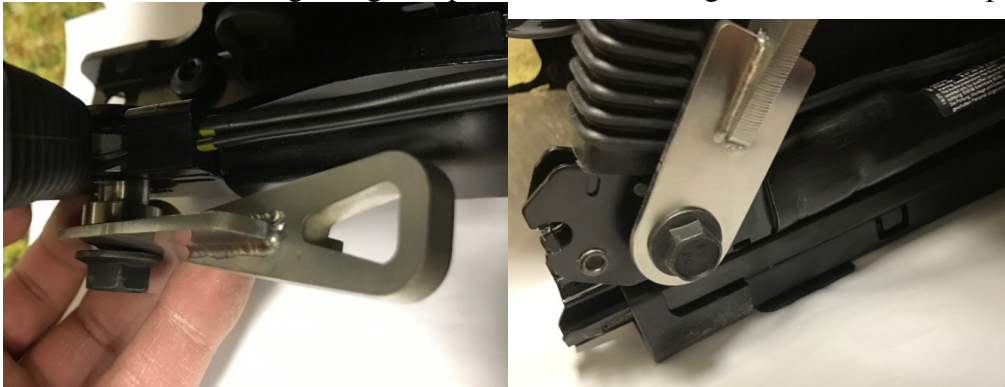
This kit has been designed to provide a mounting point for off road snap-in mount lap belts to the factory sliders.

Step 1: Remove the seat from the car. While doing so, end with the seat in a forward position allow access for bolt installation. To remove seats:

- Move seat all the way back, remove front bolts
- Move seat all the way forward, disconnect rear bolts
- move seat all the way down and to the front of its travel
- repeat with other seat
- disconnect battery ground cable
- disconnect seat harness from seats
- remove seats from car

Step 2: Install inboard (tunnel side) clip in bracket.

- Remove the factory torx bolt that secures the seat belt receiver
- insert the included stepped spacer as shown in the picture below
- secure the long straight clip in belt mount using the included bolt as pictured



Step 3: Install outboard clip in bracket.

- The included black bolts with shaved sides should be inserted from below, upwards. The included two hole reinforcement plate should go between the bolt heads and the slider. Atop the slider, the clip in lap belt should be mounted, followed by the included lock nuts. To prevent the bolts from rotating while tightening the nuts, insert a flat head screw driver between the flat portion of the bolt and the inside of the slider.



Note: a small portion of cars only have the rear hole in the slider. If your car fall into this category, the second hole must be drilled. We recommend securing slip in belt mount with the first bolt, and using that to locate where the second hole should be drilled. Do not use only one hole to secure the clip in lap belt mount. If the second hole is not centered on the slider, the bolt will not insert.

The holes in question are at backmost position on the slider (circled):



Performance driving events are by nature potentially hazardous to your health. Brey-Krause Mfg. Co. Inc. shall not be liable for injury, consequential, or other types of damages resulting from the use or misuse of our products. Proper installation of these parts is critical and should only be done by a professional shop.