

R-924X

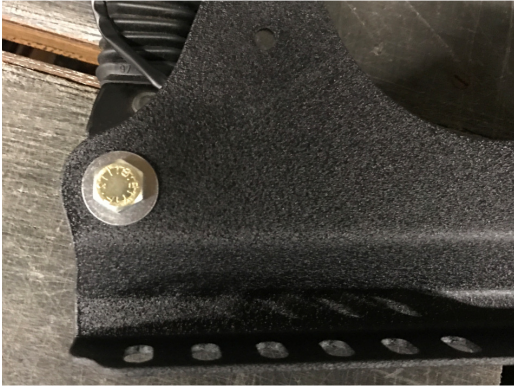
E36/Similar Side Mount Installation Instructions

Note: These side mounts allow you to mount a fix back bucket seat directly to the floor of your e36, or other cars with the same floor seat mount bolt pattern, without a matrix style adaptor plate or slider. They include mounting points for your stock seat belt buckle, clip in lap belt mounts (for a 4/5/6 point harness), bolt on lab belt mount points (for a 4/5/6 point harness), and mounting locations for the Brey Krause R-9259 sub strap mount and R-2295 fire extinguisher mount.

Step 1. Remove stock seats from the car.

- Note the position of the seat belt buckle relative to the center console
- Move seat all the way back, remove front bolts
- Move seat all the way forward, disconnect rear bolts
- move seat all the way down and to the middle of front/rear travel
- repeat with other seat
- disconnect battery ground cable
- disconnect seat harness from seats
- remove seats from car

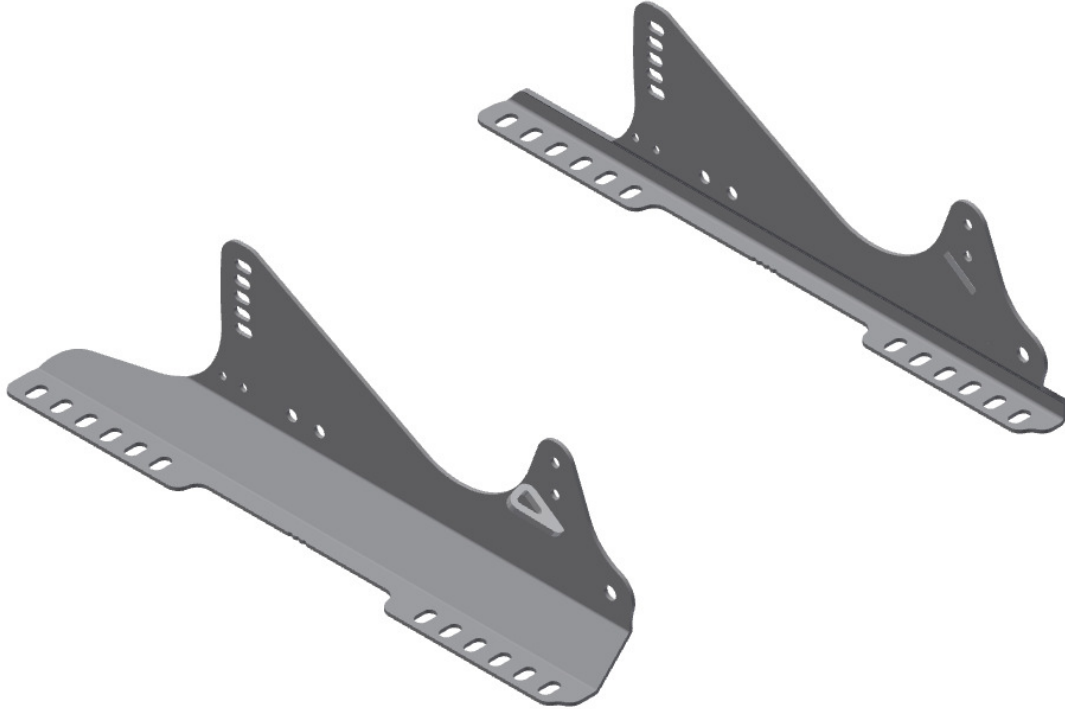
Step 2. If keeping stock buckle, remove from stock seat and install on inboard seat mount (using the included hardware). The inboard mount has a locating tab, similar to the stock seat, to properly orient the buckle. No washer is required on the buckle side.



Step 3. Attach side mounts to aftermarket seats, using the hardware included with the seats. It is recommended that you fully tighten the inside (center console side) seat mount to mount bolts, but leave the outside seat mount somewhat loose until installed in the car. Seat height is set by the rear hole, seat tilt is set by the front holes.

Note: Because of BMW's unusual seat mounting bolt locations, the side mounts are not symmetrical. The seat will sit closer to the center console than the mount locations would lead you to believe. The mounts will look unusual until you bolt them into the car. The easiest way to make sure you've mounted them correctly is to (a) keep the driver and passenger mounts separate until installed in the car and (b) keep the clip in lap belt mount points facing outwards. The tunnel side mount can be identified by the locating tab for the factory seat belt receptacle.

Seat orientation should look as follows (Driver side small size seat mount shown):



Step 4. Insert seat in car. Forward/back position is set by which holes you choose along the length of the mount. A good starting place is locating the buckle in roughly the same location you noted it was before, in step 1.

NOTE: For the factory bolts to properly attach the R-924X sliders to the floor of the car, the included square washers MUST be used—2 per bolt, 8 per seat. If the carpet is being left in your car, at least one washer must go under the seat mount for it to be properly secured to the floor. One should be mounted above the seat mount at each bolt/stud.

Step 5. Loosely insert all seat to floor bolts/nuts

Step 6. Fully tighten outside seat mount to seat bolts

Step 7. Fully tighten seat mount to floor nuts/bolts.

If steps 5-7 are not followed in that order, it will be difficult to align the mounts with the floor bolt locations.

Performance driving events are by nature potentially hazardous to your health. Brey-Krause Mfg. Co. Inc. shall not be liable for injury, consequential, or other types of damages resulting from the use or misuse of our products. Proper installation of these parts is critical and should only be done by a professional shop.