

E46 Washer Tank Relocation Bracket

Fits e46s with MK60 DSC

The Brey-Krause R-9232 washer tank relocation bracket has been designed to bolt in without modification and provide a mounting point for an e36 washer tank, part number 61661387384 or 61668370834.

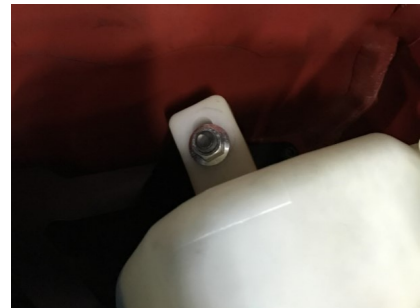
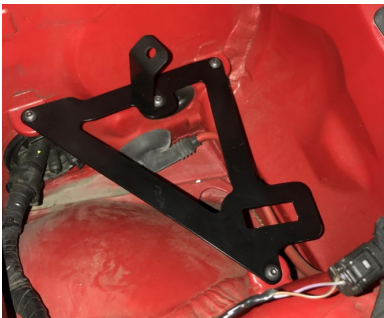
Step 1.

Bolt the mount arm to the main bracket using the included hardware. Keep it loose so the mounting arm can still move within it's slots. The mounted arm has slotted mount points to accommodate tank warping, for people using original 25+ year old tanks. Insert your tank into the slot at the front of the plate and bolt to mount arm on the rear using the included hardware. Once tank is secure, tighten lower mounting arm hardware to lock in place. Remove tank from bracket.



Step 2.

Bolt bracket into car using included hardware. Bolt tank to bracket. Relocate pump from your factory original washer tank to the e36 washer tank.



Step 3.

Factory pump wiring must be extended to reach mounting location. Both the wiring and the washer fluid hose can be passed through this small hole at the front of the bin that comes capped from the factory:

