

996/997/991/986/987/981 Floor Mounting w/ Adjustable Sub-Strap Bar
INSTALLATION INSTRUCTIONS

Note: These adapter plates allow floor mounting of your fixed back race seats in the 996/997 and 986/987 generation cars with the use of Brey-Krause R-907X series side mounts.

Step 1. Remove factory seat from vehicle.

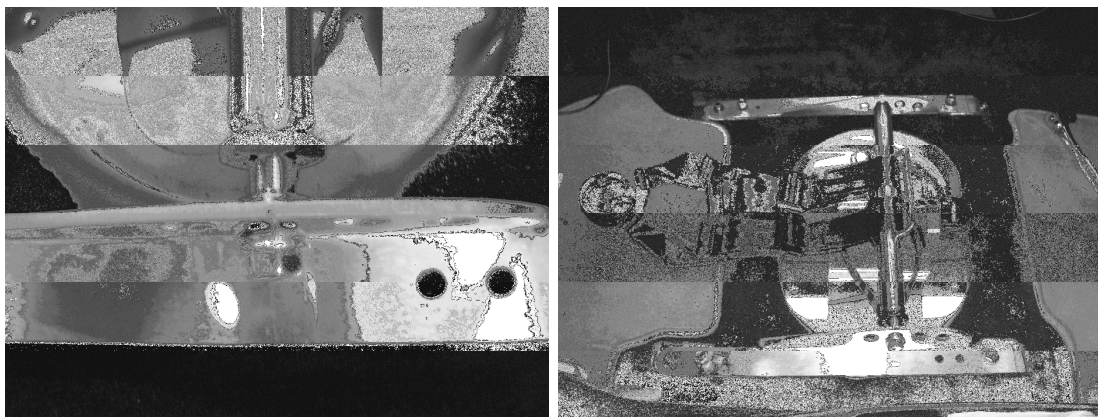
Step 2. Position Brey-Krause floor plates as shown and attach to chassis using factory hardware.



Step 3. Attach the sub-strap mount bar in the desired location. This will be determined by the following parameters:

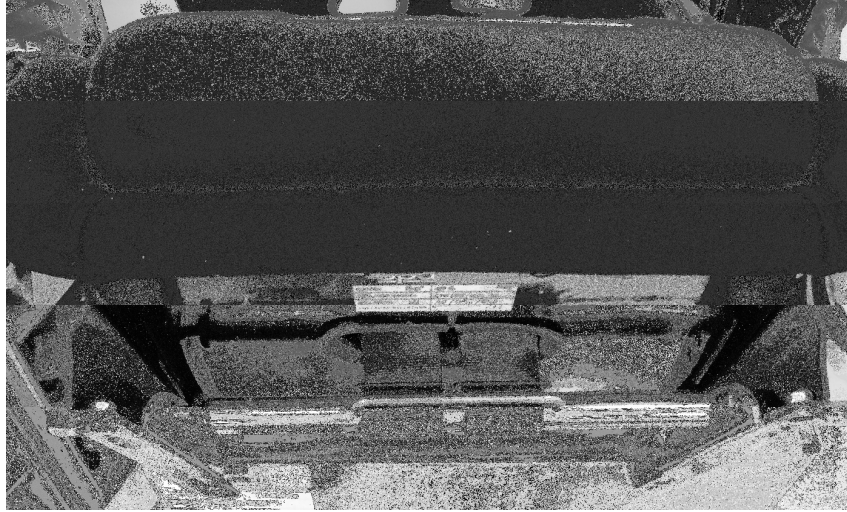
- Type of seat being used.
- The seat's fixed location given the 3 available positions.
- The use of either 5 point or 6 point harnesses.

In general, one position back from the strap slot in the base of the seat will accomplish the desired -20 degrees for a 6-point. The position directly under or one notch forward is desired for a 5-point.



The sub-bar length is adjustable, and includes two pivot washers, to be installed on the outside of the R-9044 sub strap tabs, to prevent preload on the floor mounts when the bar is tightened. This will allow the floor mounts to stay true during reinstallation after the seat is mounted. Half inch open ended wrench should be used on the adjuster to bring flush and hold as the flange head bolts are tightened. The rounded side of the pivot washer will seat in the machined radius chamfer. Avoid preload on the floor mounts. Tighten Jam Nut.

- Step 4. Remove the R-9044 from the car. Having the race seat on its back with the side mounts attached, position the R-9044 under the side mounts. Secure with the (4) black flat socket head bolts, high strength washers, and zinc lock nuts.



- Step 5. Reinstall the seat assembly in the car with the stock E-12 Torx bolts. A E-12 wrench will be needed to tighten the rear bolts if the furthest back position is used (the rear most mounting hole on the R-907X bracket will be positioned over the rear floor pan bolts).



Performance driving events are by nature potentially hazardous to your health. Brey-Krause Mfg. Co. Inc. shall not be liable for injury, consequential, or other types of damages resulting from the use or misuse of our products. Proper installation of these parts is critical and should only be done by a professional shop.