

**996 CABRIOLET & COUPE W. /REAR BOSE SPEAKER OPTION**  
**HARNESS MOUNT - INSTALLATION INSTRUCTIONS**

Note: Brey-Krause part# R-1029 harness mount bar has been designed to properly locate and mount the shoulder harness portion of a 5 point or 6 point restraint in a 996 cabriolet.

Steps 1 - 9 are for installing mounting brackets that will remain in the car. This will make the installation and removal of the bar faster and easier and will eliminate the constant removal and installation of fasteners in the body shell. - Loctite 242 or equivalent is recommended on all fasteners.

Step 1. Move seats to foremost position exposing rear seat track mounting bolts. Remove outside rear seat track mounting bolt along with the seat stop bracket. (Once the seat track-mounting bolt is removed the seat stop bracket can be removed by gently prying upward to pop out the plastic retaining pin). Also: a 10 mm. Six point socket will work to remove the seat track mounting bolt. Repeat for the other side.

**1a****1b**

Step 2. Remove outside lap belt, mounting bolt and spacer located along the doorsill.

**2a**

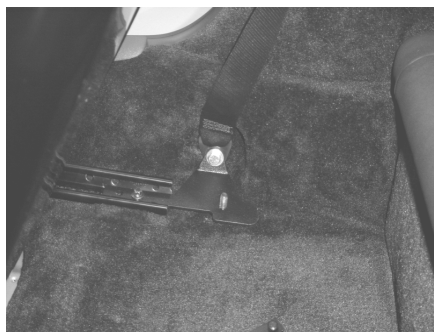
Step 3. Note: The supplied floor bracket fits both power and manual seats.

Step 4. Position large stepped spacer (supplied) at outside belt mounting point. This replaces the factory spacer. Place lap belt end bracket over stepped spacer. Make sure the belt is oriented properly. Position the floor mount bracket as shown. Install supplied 2" long bolt and washer. Note: do not tighten and this time. (SEE ATTACHED DRAWING 1029-A)

**4a****4b**

Step 5. Reinstall original seat track mounting bolt. (Do not reinstall seat stop bracket.)

Step 6. Tighten bolts from steps 4 & 5. Repeat on other side.



**6a**

Step 7. Carefully remove rear seat cushions to expose the rear outside seat belt mounting point. They are held in with velcro and are removed by lifting upward.



**7a**

Step 8. Pry plastic caps off of the outside seat belt mounting points. Remove outside rear seat belt mounting bolts -(leave factory spacer in place.) Position rear mounting bracket as shown. Install 1 3/4" long bolt with small stepped spacer thru the factory belt, mounting bracket and factory spacer. Repeat for other side. SEE ATTACHED DRAWING 1029-B)



**8a**

Step 9 Reinstall the lower seat cushions.

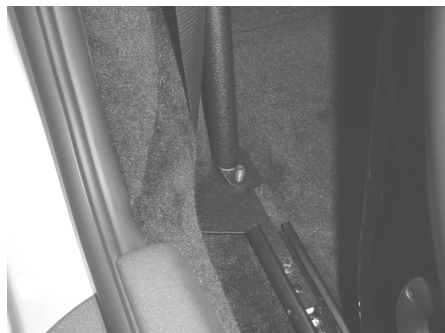
Step 10 Position main bar as shown. Note: you may have to lightly pry the rear mounting brackets to position the main bar between them. Install 7/8" long bolts and washers. (One for each side.) Do not tighten at this time.



10a

10b

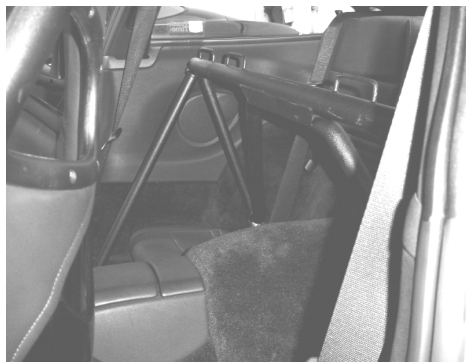
Step 11. Position support tube as shown and install 7/8" bolts and washers at each end as shown below. (Passenger side shown)



11a

11b

Step 12. Tighten all fasteners. Completed installation should look like this.



12a

Note: Periodically recheck fasteners for tightness. Shoulder straps should be wrap mounted around main tube and thru guides.

Performance driving events are by nature potentially hazardous to your health. Brey-Krause Mfg. Co. Inc. shall not be liable for injury, consequential, or other types of damages resulting from the use or misuse of our products. Proper installation of these parts is critical and should only be done by a professional shop.

L.H. TRACK BRACKET  
K-5935-51

R.H. TRACK BRACKET  
K-5935-52

L.H. BRACKET  
K-5934-51

R.H. BRACKET  
K-5934-52

L.H. SUPPORT TUBE  
R-1029-05

R.H. SUPPORT TUBE  
R-1029-06

ONE FASTENER  
BAG REQ. SEE DETAIL

FASTENER BAG DETAIL

7/16-20 X 1 3/4"  
GRADE 8  
HEX BOLTS  
YELLOW ZINC  
2 REQ.

7/16-20 X 2"  
GRADE 8  
HEX BOLTS  
YELLOW ZINC  
2 REQ.

NOTE LENGTH

7/16-20 X 7/8"  
GRADE 8  
HEX BOLTS  
YELLOW ZINC  
6 REQ.

7/16" WASHERS  
ZINC PLATED  
8 REQ.

CONE SPACERS  
NICKEL PLATED  
2 REQ. R-7031-51

STEP SPACERS  
NICKEL PLATED  
2 REQ. R-7030-51

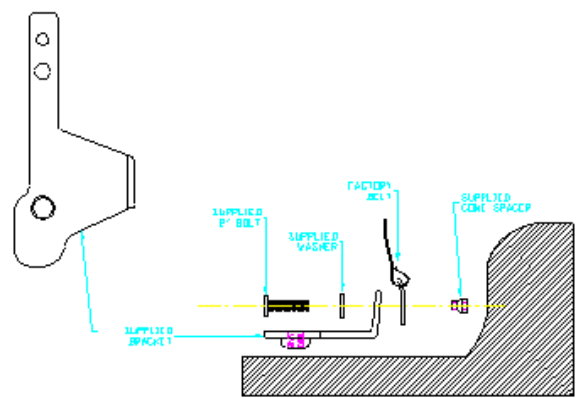
SKIN PACK AS  
SHOWN FOR  
R-1029 CABRIOLET  
HARNESS MOUNT  
BAR

BREY & KRAUSE  
1209 W LEHIGH ST.  
BETHLEHEM Pa. 18018

REV.	DATE	DESCRIPTION	PART NO. R-1029-02	NOTES :
			MOUNTING PACKET FOR R-1029 CABRIOLET HMB	
		RELEASED 4/24/01		SCALE :

REV.	DATE	DESCRIPTION	PART NO. R-1029-02	NOTES :
			MOUNTING PACKET FOR R-1029 CABRIOLET HMB	
		RELEASED 4/24/01		SCALE :

R-1029-A



R-1029-B

